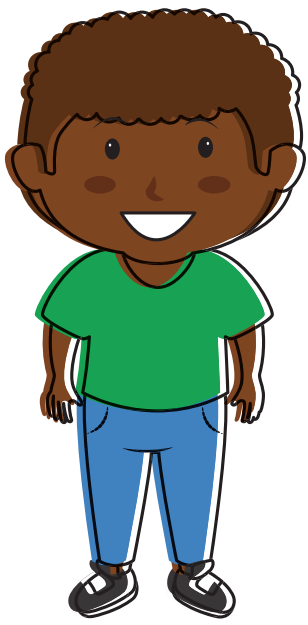




# HAVE YOUR SAY ON A NEW STRATEGY FOR CHILDREN AND YOUNG PEOPLE WHO ARE IN CARE AND CARE LEAVERS

## A guide for children and young people

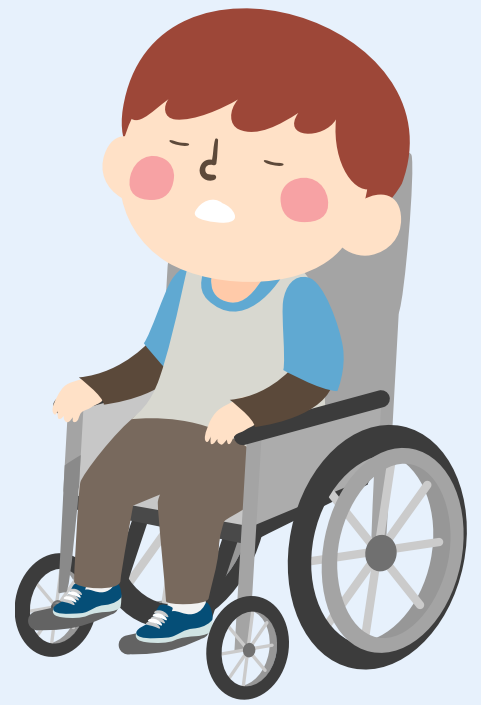
### We want your views



In West Sussex, we want to make sure that children who are looked after and care leavers get the best possible support and help when they need it. We have been working on putting together a new strategy which sets out how we are going to do this.

### Our priorities for you

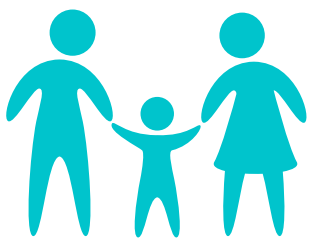
We talked to lots of people about how we could make things better for children who are looked after and care leavers. Our task has been to focus on what the most important aspects are, and, in doing that, we have identified seven priorities for this plan.



COMPLETE THE CONSULTATION NOW AT  
[WWW.WWWWWWWWWW.COM](http://WWW.WWWWWWWWWW.COM)



# OUR PRIORITIES FOR YOU



## ONE

BEFORE YOU GO INTO CARE, WE WILL HELP YOUR FAMILY TO KEEP YOU FROM COMING INTO CARE IN THE FIRST PLACE, BUT WE WILL ALWAYS DO WHAT IS BEST FOR YOU.

---



## TWO

WHEN YOU ARE IN CARE, WE WILL MAKE SURE THAT YOUR PREFERENCES AND NEEDS ARE CONSIDERED WHEN CHOOSING WHERE AND WHO YOU SHOULD LIVE WITH.

---



## THREE

WE WILL MAKE SURE YOU FEEL SAFE, SETTLED AND COMFORTABLE WHERE YOU LIVE AND THAT THE PEOPLE WHO LOOK AFTER YOU ARE SUPPORTED SO THAT THEY CAN CARE FOR YOU IN THE BEST POSSIBLE WAY THROUGH CHILDHOOD AND BEYOND.

---



## FOUR

WE WILL HELP YOU FEEL GOOD ABOUT YOURSELF AND BE HEALTHY.

---



## FIVE

WE WILL SUPPORT YOU TO HAVE A GOOD LEARNING EXPERIENCE AND DO THE BEST YOU CAN. WE WILL ENCOURAGE AND SUPPORT YOU TO TAKE UP OPPORTUNITIES IN EDUCATION, EMPLOYMENT AND TRAINING UNTIL THE AGE OF AT LEAST 25, IN WAYS THAT SUIT YOU.

---



## SIX

WE WILL MAKE SURE THAT WE LISTEN TO YOUR OPINIONS AND VIEWS AND THAT OUR DECISIONS ABOUT YOUR CARE ARE INFLUENCED BY YOUR WISHES AND FEELINGS. IF WE CANNOT MAKE THE DECISION YOU WANTED, WE WILL EXPLAIN WHY, AS SOON AS POSSIBLE.

---



## SIX

WHEN YOU LEAVE CARE, WE WILL HELP PREPARE YOU TO LIVE INDEPENDENTLY. WE WILL SUPPORT YOU TO THINK ABOUT HOUSING, MONEY, EDUCATION AND WORK.



Now we want to know what you think of our plan..



We want to make this the best plan we can create – one that has the greatest impact on making young people in care and care leavers lives the best they can be.

We'll listen to your views and consider these when we create the final version of the plan.



**COMPLETE THE CONSULTATION NOW AT  
[WWW.WWWWWWWWWW.COM](http://WWW.WWWWWWWWWW.COM)**

**GOT ANY QUESTIONS? EMAIL  
[VOICE@WESTSUSSEX.GOV.UK](mailto:VOICE@WESTSUSSEX.GOV.UK)**



**Designed by Toby Wilson, Voice and Participation Team**